

L  
A  
N  
I  
K  
A  
  
S  
H  
O  
W  
E  
R  
S  
P  
A  
S



# PULSE

SHOWER SPAS

**Lanikai ShowerSpa**  
**Model #1028-CH & 1028-BN**  
**Owner's Manual**



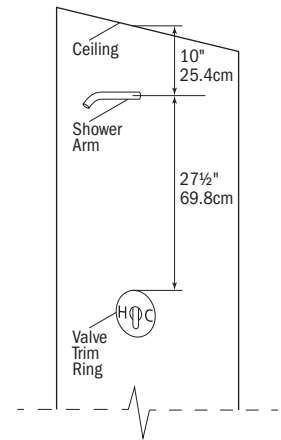
# Lanikai ShowerSpa Installation Instructions

## BEFORE YOU BEGIN

Measure the following to ensure your Lanikai ShowerSpa will fit properly

- 1) Center of existing shower arm to top of valve trim ring.  
Minimum 27½" (69.8cm) required.
- 2) Center of existing shower arm to top of ceiling.  
Minimum 10" (25.4cm) required.

MINIMUM CLEARANCE



## Parts and Tools Required

Please lay out and become familiar with all parts prior to assembly.

Read all instructions once before beginning and contact Customer Support if you have any questions at 1-888-785-7320 (8:30 am–5:00 pm pacific time Monday–Friday) or email support@pulseshower spas.com.

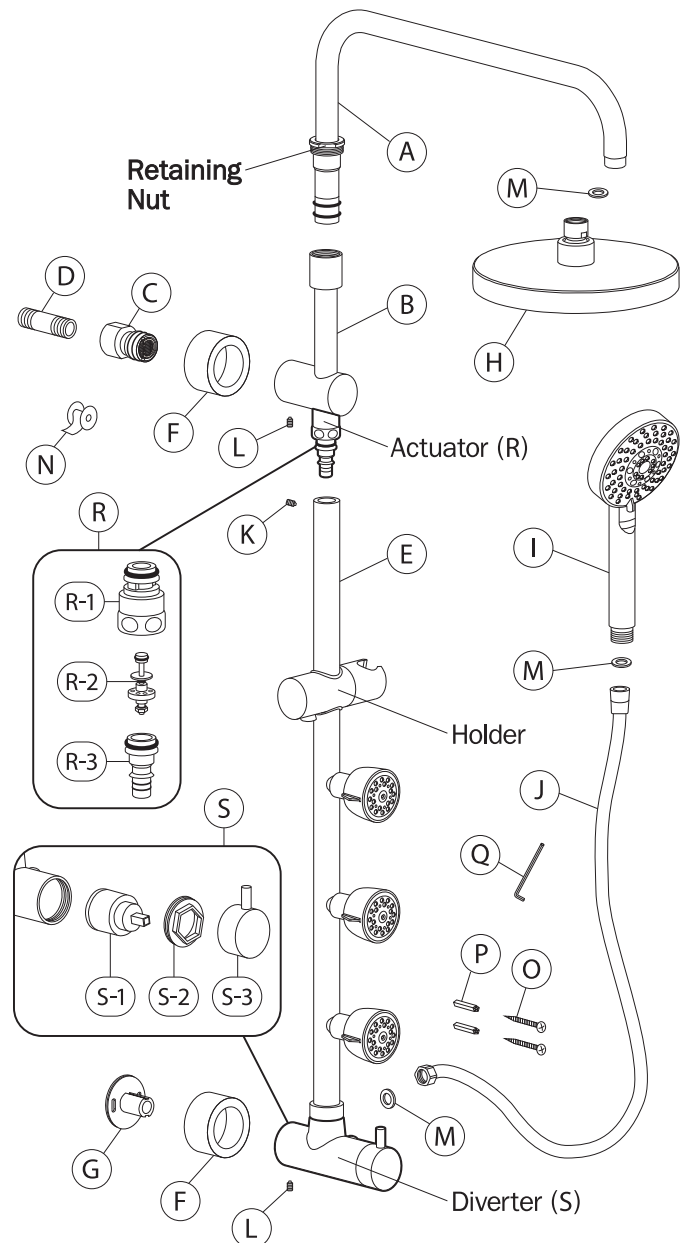
For more information visit [www.pulseshower spas.com/lanikai](http://www.pulseshower spas.com/lanikai).

### Parts List

- |                                   |                              |
|-----------------------------------|------------------------------|
| A) Shower Arm – 1                 | N) Teflon Tape – 1           |
| B) Top Tee – 1                    | O) Optional Screws – 2       |
| C) Inlet Fitting – 1              | P) Optional Wall Anchors – 2 |
| D) 2" NPT Brass Nipple – 1        | Q) 2.5mm Allen Wrench – 1    |
| E) Shower Pipe – 1                | R) Actuator                  |
| F) Escutcheon – 2                 | R-1) Actuator Housing        |
| G) Lower Mount w/ Tape – 1        | R-2) Actuator Piston         |
| H) Shower Head – 1                | R-3) Brass Fitting           |
| I) Hand Shower – 1                | S) Diverter                  |
| J) Flexible Hose – 1              | S-1) Cartridge               |
| K) Set Screw – 1                  | S-2) Retaining Nut           |
| L) Set Screw – 2                  | S-3) Handle                  |
| M) Rubber Washer – 4<br>(1 extra) |                              |

### Tools Required

- Adjustable Wrench
- Pencil
- Allen Wrench 2.5mm (supplied)
- Level (optional)
- Drill with 6mm (¼") masonry bit (optional)
- Flashlight (optional)



# Lanikai ShowerSpa Installation Instructions

Congratulations on your purchase of the PULSE Lanikai Rain Shower system. There's no better way to start your day!

Follow these simple steps in the order presented to help avoid mistakes. When finished, multiple, soothing showering options are at your fingertips.

Assembly and installation of the Lanikai Rain Shower System is designed to be quick and easy. If you have any installation questions or performance problems call PULSE Customer Service toll free at 1-888-785-7320 (8:30 am–5:00 pm pacific time Monday–Friday) or email support@pulseshower spas.com before returning this product to the store.

## FOR NEW CONSTRUCTION OR COMPLETE REMODEL

- A hot/cold Automatic Compensating Shower Valve which complies with ASSE 1016-2011/ASME A112.1016-2011/CSA B125.16-11 is required (NOT INCLUDED)
- Nipple should extend no more than ½" past finished wall surface.

1. Determine the length Nipple (D) needed.
  - a. Place mark on existing shower arm at wall surface. Unscrew shower arm from elbow in wall.
  - b. Measure distance from mark on shower arm to end of shower arm threads. Add ½" to this measurement, and then round to nearest ½".

Example 1: If measurement = 1¼", add ½" = 1¾", rounded = 2" NPT nipple—this is the length needed.

Example 2: If measurement = 1⅝", add ½" = 2¼", rounded = 2" NPT nipple—this is the length needed.

**IMPORTANT**—If existing shower arm is located above the tile/fiberglass wall surface you must add the distance from the sheetrock to face of the tile/fiberglass shower wall to the above measurement.

**NOTE**—If supplied 2" Nipple (D) is not the correct length based on above formula, you must obtain the correct size, sold separately. Various length NPT brass nipples are readily available at most hardware stores.

2. Apply a generous amount of Teflon Tape (N) to both ends of the Nipple (D).
3. Hand tighten Inlet Fitting (C) onto Nipple (D), then Nipple to fitting in wall. Use adjustable wrench on the Inlet Fitting to tighten both connections simultaneously. Continue tightening until both connections are secure with no leaks.
4. Connect Top Tee (B) into Shower Pipe (E) and align with Diverter. Make sure Top Tee is fully seated into Shower Pipe and secure with Set Screw (K).
5. Slide Shower Arm (A) into Top Tee (B) and hand-tighten Retaining Nut until secure.
6. Slide Top Escutcheon (F) over Top Tee (B), then slide Bottom Escutcheon (F) over Diverter.
7. Loosen Set Screw (L) on Diverter, slide Lower Mount (G) into Diverter and tighten set screw. **Do Not Expose Tape!**
8. Push Top Tee (B) over Inlet Fitting (C) until flush against fitting. Position Diverter so Shower Pipe (E) is plumb (vertical). Mark location of Lower Mount (G) with pencil.

9. Wall surface must be clean of any residue and completely dry. Remove covering of two-face tape and reposition Lower Mount (G) to mark so the optional mounting holes are horizontal. Apply pressure to mount for 30 seconds by pushing firmly against the Diverter. To ensure proper adhesion, allow one hour before using your ShowerSpa and keep area around the mount as dry as possible for the first 24 hours. Tape will be fully cured after 24 hours.

**OPTIONAL**—Secure Lower Mount (G) with permanent wall anchors. Mark hole locations in Lower Mount. Drill 1¼" deep holes using 6mm (1/4") masonry/tile drill bit. Insert Wall Anchors (P) and secure Lower Mount with Screws (O).

## CAUTION — LIVE PLUMBING IN WALL

10. Position Shower Pipe (E) parallel to wall by adjusting Diverter on Lower Mount (G). Secure Diverter to Lower Mount with Set Screw (L).
11. Insert Rubber Washer (M) into both ends of Hose (J). Connect hex-head end to outlet on Diverter and tapered end to Hand Shower (I). Place Hand Shower (I) into Holder.
12. Insert Rubber Washer (M) in Shower Head (H) and tighten securely to Shower Arm (A).

## Flow Restrictor Information

This unit contains flow restrictors limiting flow to 2.5 gallons per minute. If the flow rate is less than expected, or reduces over time, you may have an obstruction at the inlet restrictor.

To check for debris, remove shower unit from wall, exposing the Inlet Fitting (C) (attached to wall).

Using needle nose pliers, rotate C-clip until one end enters the cutout section of the fitting, then pull the C-clip out completely.

With needle nose pliers, gently depress the inner yellow ring of the restrictor to expose the white spindle. Hold the spindle with pliers and pull toward you to remove.

Remove the screen and turn cold water on—**SLOWLY**.

Run water for 15 seconds to remove debris from water line.

Check screen and restrictor for sediment. Use water and a soft nylon brush (if necessary) to remove sediment.

When finished, first replace the screen, then the restrictor and finally the C-clip.

The Shower Head (H) and Hand Shower (I) are equipped with flow restrictors limiting flow rate to 2.5GPM(9.5LPM) as per the standard ASME A112.18.1/CSA B 125.1.

Your Lanikai Showerspa is fully functional with or without the restrictors. Depending on your local plumbing codes, the restrictors may or may not be necessary.



# PULSE

## SHOWERSPAS

### Usage

Diverter valve controls the shower head, handheld shower and body spray functions. Turn diverter knob right or left to the desired setting. The diverter will click into place at each function.

The shower arm height is adjustable by sliding the arm up or down while holding the shower pipe with your free hand. The arm also swings freely to the left or right by gently pressing on the arm or shower head.

Rotate face of hand shower to switch settings and rotate holder forward or back to adjust angle.

Rotate body jets  $\frac{1}{4}$  turn left or right to select stimulating or soothing functions. Change the angle of spray by pushing the jet left, right, up or down.

Adjust hand shower height by depressing button on holder and sliding it up or down.

Always turn cold water on first to help prevent any accidental burning or scalding; especially for children and elderly.

Do not use any part of the Lanikai Rain Shower System as a support device.

### Care

To keep your ShowerSpa looking new, wipe down after each use with a soft cotton cloth.

Protect your ShowerSpa from hard water stains and mineral deposits by periodically using an auto spray wax.

Clean using mild liquid soap and a non-abrasive sponge or cloth. Rinse with clean water.

#### **Do not use any kind of chemicals or abrasives.**

If the flow rate of your ShowerSpa is less than expected, reduces over time or functions are not completely independent, the actuator can be removed to clean sediment. Please CALL TECH SUPPORT @ 1-888-785-7320 (8:30 am–5:00 pm pacific time Monday–Friday) and we will be happy to assist you.

## Manufacturer's Warranty

PULSE Shower Spas, Inc. warrants that all ShowerSpas are free from defect in workmanship and/or materials for a period of three years from the date of purchase. This warranty extends to the original purchaser only and is non-transferable.

This warranty does not cover, and PULSE ShowerSpas will not pay for conditions, malfunctions or damages resulting from (1) normal wear and tear, improper installation (whether performed by a contractor, service company or the consumer), improper maintenance, misuse, abuse, negligence, accident or alteration; (2) the use of abrasive, caustic or "no-rinse" cleaning agents; (3) the use of the product in any manner contrary to the product instructions; (4) conditions in the home such as excessive water pressure or corrosion.

Should any ShowerSpa be determined by PULSE ShowerSpas, Inc. to be defective in normal residential use, at the option of PULSE ShowerSpas, Inc., such product shall either be replaced or repaired and returned to the customer free of defects. The consumer shall give notice of any defects to PULSE ShowerSpas, Inc. within thirty days of discovery of such defect.

Proof of purchase (original sales receipt) must be provided to PULSE Shower Spas, Inc. with all warranty claims. PULSE ShowerSpas, Inc. is not responsible for labor charges, removal charges, installation or other consequential costs. In no event shall the liability of PULSE ShowerSpas, Inc. exceed the purchase price of the ShowerSpa.

Some states/provinces do not allow limitations of how long an implied warranty lasts or the exclusion or limitation of such damages, so these limitations and exclusions may not apply to you. This warranty gives the consumer specific legal rights. You may also have other rights that vary by state/province.

Follow manufacturers recommended installation. Use caution with children under ten years of age. Do not use ShowerSpa as a support device. Do not use harsh chemicals or abrasives when cleaning. Turn water supply off when servicing your ShowerSpa.